

2023 - 2024

LOCALITY PLAN

FOR THE **EAST** COMMUNITIES

ARMTHORPE • THORNE • KIRK SANDALL • HATFIELD
MOORENDS • EDENTHORPE • STAINFORTH • BARNBY DUN



Welcome to the 2023 Locality Plan for the East communities of Doncaster.

In 2022, Doncaster Council published its first ever locality plans. Working with partners, communities and businesses, a set of agreed priorities for each area across Doncaster were agreed, alongside a list of actions to support them.

The 2023, East Locality Plan looks back at what has been achieved throughout 2022 and sets out the plan for how this work will continue and grow over the next 12 months, as we work together to improve the lives of those communities that make up the North Locality.

At the core of the plan is the ongoing commitment by all Team Doncaster partners to hear the voices of local people, to understand the strengths in our neighbourhoods and build capacity in communities so that they can take control of their own destiny.

This plan is for the
community and we
encourage you to read
it and get involved!



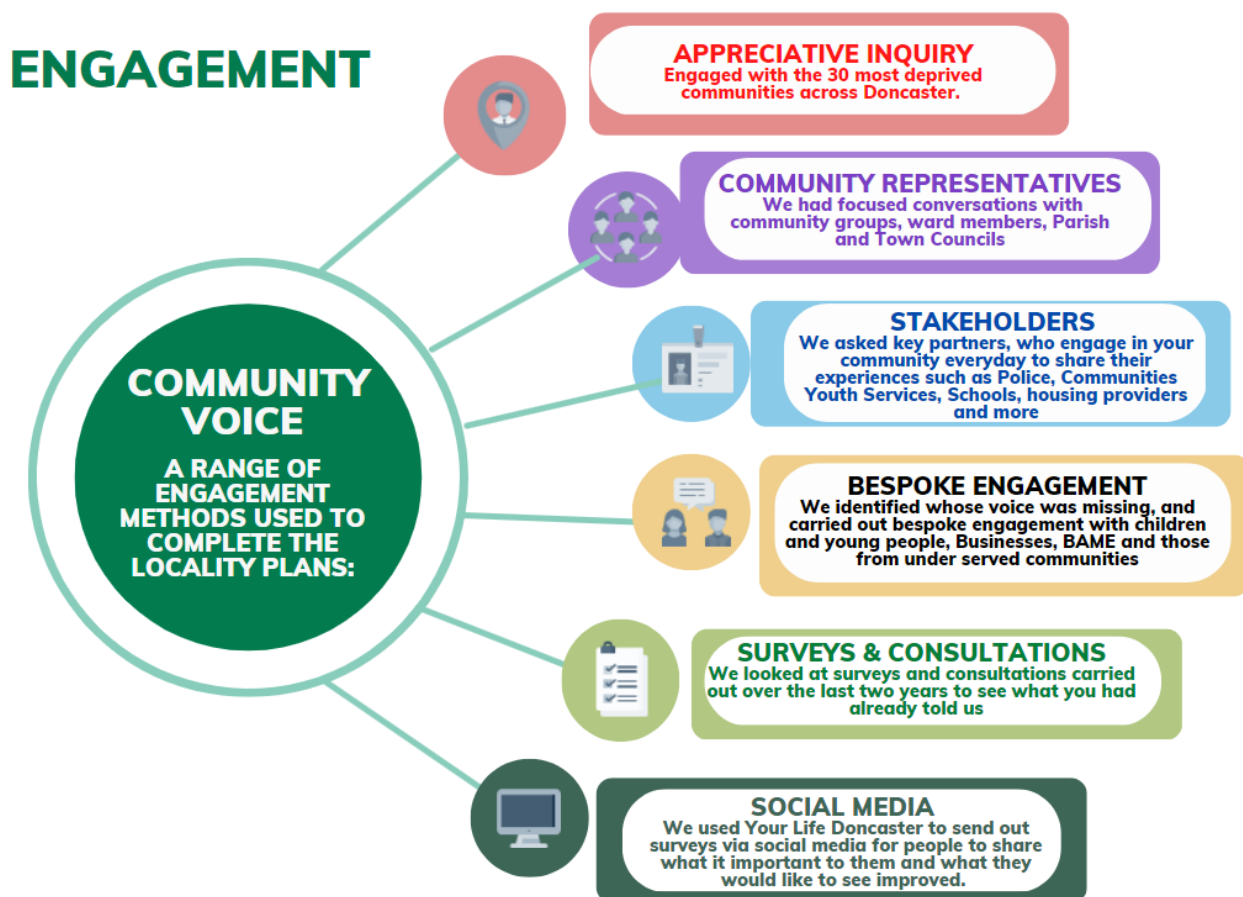
WHAT IS A LOCALITY PLAN?

Locality plans will look at how we can work together to strengthen communities and improve the lives and opportunities for the residents living there.

Doncaster is a place of places, where no two communities are the same. This means that deciding on what services, support or priorities are required at a City-wide level can risk leaving some communities behind. Planning these things at a locality level allows us to make sure that this will never happen.

A locality plan is something that needs to be truly owned by the communities it affects. This plan has been put together with more input and engagement from those living and working in the East area than ever before. Our communities have told us exactly what they want to see change and improve in the areas where they live and we have taken this insight and turned it into a workable plan we will deliver in conjunction with our communities and partners.

We engaged with communities through a number of different ways:



WHAT IS THE EAST LOCALITY?

For the purpose of delivering the locality approach, Doncaster has been split into four localities, each consisting of a number of different communities.

The 'East' locality includes the following wards:

- Armthorpe
- Edenthorpe and Kirk Sandall
- Hatfield – which includes Dunsville, Duncroft, Hatfield Woodhouse and Lindholme
- Stainforth and Barnby Dun
- Thorne and Moorends

Although each of the above wards are grouped under the East locality, they will all also be considered and supported for the unique communities they are.

The East locality is located east of the City Centre with county boundaries to East and North Yorkshire

East is home to Thorne Leisure Centre, Armthorpe Leisure Centre, Castle Park, and the Canal Water Way covering Kirk Sandall and Barnby Dun and Hatfield House.

The East has great access to a variety of green spaces and walks. Thorne and Hatfield Moors part of the Humberhead Peatlands. A historic reserve, as the last remnants of a large wetland that occupied the floodplain of the Humberhead levels thousands of years ago. An area of beauty and the home to a diverse range of wildlife.

The East locality has Thorne as a principal town centre in Doncaster attracting visitors, business and investment opportunities. Additionally, the east is made up of several Parish and Town councils.



Key facts about your community

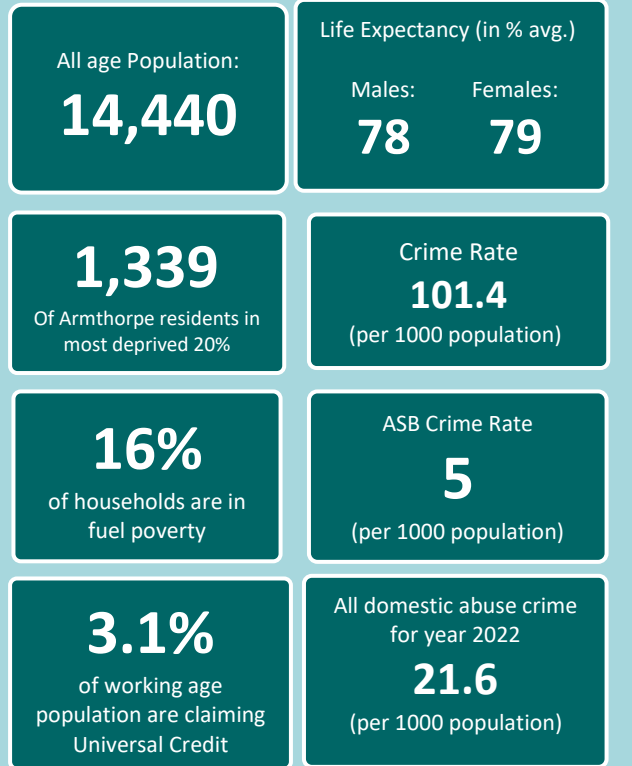
The Ward is made up of 1 village; Armthorpe with a population of 14,440.

Armthorpe is a vibrant village with a host of shops, facilities and community venues. A village of mining history, which it shares proudly with the community.

Armthorpe has a range of properties, primary and secondary schools and excellent transport links that attract residents to the area.

Armthorpe village is surrounded by attractive and open countryside and seeks to enhance the quality and role of the natural environment and its many features. (Armthorpe ND, 2021)

This ward has the following plans; Main Town Local Settlement Plan and the Neighbourhood Plan



Like



Local Support & Facilities:

A village full of community assets, community centre, library, leisure centre, great schools



Environment & Green spaces:

Nearby woods and green spaces for dog walks and family days out. Enjoying the natural environment



Thriving Communities:

The people, the great community spirit and friendly village feel. Community events.

Improve



Community Safety:

Improving community safety, road safety and tackling anti-social behaviour.



Environment & Green Spaces:

Keeping green spaces and village areas clean and tidy.



Thriving Communities:

Community events and opportunities to volunteer in the community

'Traffic is an issue, lots of diversion tend to come through the village meaning lots of customers are late'

'Zebra crossing near the horse and groom, so when trying to cross the road people and children from the Western side can do so safely. Put traffic calming cushions coming into the village.'

'Everyone pulls together and there is a real sense of community.'

'Quiet, friendly neighbourhood with local amenities.'

'Self-sufficiency. Most aspects of shopping can be done via the shops in Armthorpe without necessarily travelling out of the village. Community centre and the fitness programmes provided by Sam, set up by our 'ladies' group.'

'I like that it's just generally (apart from the occasional ASB on the Park/surrounding streets) nice and quiet and that you don't need to leave the village if you don't want too.'

'Improvements to local play areas would be good.'

Edenthorpe and Kirk Sandall

Key facts about your community

The Ward is made up of 2 villages; Edenthorpe and Kirk Sandall with a population of 9,954.

Edenthorpe is a friendly and thriving village and civil parish with a range of local shops, social and community spaces and hugely valued areas of woodland and open space.

Kirk Sandall is a popular area, benefitting from strong transport links. Kirk Sandall also has access to a range of shopping and recreational facilities. It has a proud history as a centre for glass manufacture.

The Glass Park and the canal tow path are popular areas for walks.

This ward has the following plans; Edenthorpe Neighbourhood Plan and Barnby Dun and Kirk Sandall Neighbourhood Plan.

All age Population:

9,954

Life Expectancy
(in % avg.)

Males: Females:

79 84

0

Of residents in most deprived 20%

Crime Rate

73.3

(per 1000 population)

12%

of households are in fuel poverty

ASB Crime Rate

4.3

(per 1000 population)

1.8%

of working age population are claiming Universal Credit (Oct 21)

All domestic abuse crime for year 2022

14.9

(per 1000 population)

Like



Environment & Green spaces:

Enjoy all access to green spaces such as Parks, Canal walks and woodland.



Local Support & Facilities:

Enjoy the local facilities; near supermarkets, the church community, shops, schools and local pubs.



Thriving Communities:

A community of friendly people and good neighbours.

Improve



Community Safety:

Concerns over road safety with speeding cars and inconsiderate parking.



Environment & Green Spaces:

Would like to see green habitats protected from over development and litter.



Youth Provision & Thriving Communities:

Accessible buildings for community use, especially a youth club.



Health, Wellbeing:

Dedicated cycle ways into the City centre.

'Good neighbours, good transport links, easy access to open areas.'

'Stop building new houses. Infrastructure cannot cope with it. Taking all green areas. Would like to have better police service and cleaner town centre.'

'We have great local amenities and green spaces in a good central location.'

'The Local Community with Councillors appears to be tight knit and very motivated to improving the environment.'

'School time parking and traffic issues.'

'It would be nice to have more lighting on paths around public parks.'

'A better more reliable Bus service, roads improved. More events for younger people to attend.'

Hatfield

Key facts about your community

Hatfield ward is made up of several communities: Hatfield, Dunscroft, Dunsville, Hatfield Woodhouse. Hatfield ward population has a total population of 17,584.

Hatfield ward area has historically been used as agricultural land and was split into areas known today as Dunscroft and Dunsville. Quarry Park and all the surrounding shops, restaurants and food outlets are easily accessible from Dunscroft and Dunsville.

Hatfield Woodhouse is a small, semi-rural village sitting opposite Hatfield, Dunsville and Dunscroft. Hatfield Water Park, offers a range of activities for local communities as well as attracting visitors to the area.

This ward has the following plans; Main Town Local Settlement Plan for Hatfield, Dunscroft and Dunsville.

All age Population:

17,584

Life Expectancy
(in % avg.)

Males: Females:

79 82

5,459

Of Hatfield residents in most
deprived 20%

Crime Rate

120

(per 1000 population)

16.5%

of households are in fuel
poverty

ASB Crime Rate

5.5

(per 1000 population)

3.3%

of working age population
are claiming Universal
Credit (Oct 21)

All domestic abuse crime
for year 2022

23.8

(per 1000 population)

Like



Environment & Green spaces:

A beautiful village with a country feel and a good business community.



Thriving Communities:

Lots of volunteers in the community that work together to make it a great place.



Health & Wellbeing:

Places to keep healthy, such as the cricket club, yoga and dance classes, parks.

Improve



Health & Wellbeing:

Health care provision, both health centres are very busy.



Transport:

Improve public transport, with more reliable links and safe cycle areas.



Youth Provision:

More for all children and young people to do in their community

'The community, the people all help each other. I like the facilities in the village, with good transport links.'

'Traffic speeding near school, it's dangerous.'

'Village Hall brings people together, with good volunteers at Village Hall. Residents look after the area. Green spaces are clean and well looked after.'

'Youth club for children, better use of the sports fields.'

'Health services there are only two doctors one in Hatfield and one in Dunscroft and trying to get an appointment is near impossible.'

'The area I live is dark, isolated and close to a council car park and stretch of bridleway which attracts Vehicles at all hours of the night which is open 24 hours. Better lighting, regular patrols, gating the access would make me feel safer and reduce crime in this area.'

'Successful garden club which has 2 shows per year and monthly talk with a speaker at Working Men's Club.'

Stainforth and Barnby Dun

Key facts about your community

This ward is made up of two communities; Stainforth and Barnby with a population of 9,930

Stainforth is an expanding village with a central spine of shops, supermarkets and food outlets. Stainforth is an active community supported by a civil and town parish with Town Council status granted to the Parish Council in 1998.

Barnby Dun is closely linked with Kirk Sandall sharing a Parish Council. Barnby Dun has a variety of amenities, with local schools, social clubs, farm shops and regular theatre productions. An active community supported by councillors and local community.

This ward has the following plans; Main Town (with Duncroft, Dunsville and Hatfield), Well Doncaster Plan, Shaping Stainforth, Stainforth Neighbourhood Development Plan (in development), Barnby Dun and Kirk Sandall Neighbourhood Plan, and Stainforth Town Deal

All age Population:

9,930

Life Expectancy
(in % avg.)

Males: Females:

78 81

6,395

Of residents in most
deprived 20%

Crime Rate

153

(per 1000 population)

19.5%

of households are in fuel
poverty

ASB Crime Rate

6.3

(per 1000 population)

4%

of working age
population are claiming
Universal Credit (Oct 21)

All domestic abuse crime for
year 2022

34.6

(per 1000 population)

Like



Thriving Communities:

The community – ‘it’s not where you live, but who you live next door to.’



Local Support & Facilities:

Community activities from Stainforth4All, the Family hub, the football club and Stainforth Community Centre.



Environment & Green spaces:

Nice places to walk; Glass Park, Peacock Park, Welfare Park and the canal.

Improve



Community Safety:

Reduce the various anti-social behaviours in our community



Environment & Thriving communities:

Improve the appearance by dealing with derelict or run-down buildings, and keeping pathways clean.



Thriving communities:

Need community resilience for those who feel excluded due to a disability.

‘More lampposts as on my street there are not many this would make it brighter at night. Also security cameras would make me feel safer.’

‘I feel safe in my community as in general it is a nice village and I know a lot of my neighbours so I know if I'm in trouble then I can rely on them.’

‘Walking groups or team sports. More high intensity activities/groups exercise, boot camp.’

‘Stainforth junior’s football club. S4all has been really good. Good activities in the summer holidays.’

‘Lots of shops not open in the day or empty. Too much litter and uneven path surface. Parking is really bad.’

‘I really enjoy the community events in the summer for kids. We need more of these throughout the year.’

‘Canal walks, glass park walks, plenty of local venues with fitness classes, nice village and shops.’

Thorne and Moorends

Key facts about your community

This ward is made up of two communities; Thorne and Moorends with a population of 17,921.

Thorne is a market town and civil parish, and still boast many shops and services that are used by local residents and visitors. A history of boat building is evident in the thriving marinas, boat yards and boat building still in Thorne. The Flat landscape of Thorne enables access to many green space, including marked walks.

Moorends is a village has developed into its own community serviced by shops, schools, allotments and sports facilities. It is part of the civil parish of Thorne. Moorends is the gateway to Thorne Moors, part of the Humberhead Peatlands Natural Nature Reserve.

This ward has the following plans; Main Town (Thorne), Well Doncaster Plan, Thorne and Moorends Neighbourhood Development Plan (In development), and Thorne and Moorends Masterplan



Like



Environment & Green spaces:

Green spaces such as local parks and the local nature reserve.



Thriving Communities:

Great community events, such as the Christmas lights switch on and summer festivals.



Thriving Communities:

Community centre, like Moorends Miners Welfare that provide activities for all members of the community.



Businesses:

The independent shops and business with a strong business community.

Improve



Businesses:

Promotion of local shops and businesses and community events



Health & Wellbeing:

Leisure facilities, waiting for the reopening of the leisure centre.



Thriving Communities:

More community all age events.



Environment & Sustainability:

Less litter from local fast food places and less dog fouling.

'Community spirit. People pull together, would never move from here and allotments keeps me here. Close to nature, out in sticks, the moors are really good. People of the community. Working in allotments and volunteering.'

'Speeding motorists on Kirton Lane are a problem to aging and disabled residents.'

'Improved transport links - buses quite often don't turn up. There seem to be quite a lot of young people wandering around - maybe something for them to do - a youth club or something similar perhaps?'

Friendly and quiet. Close to Thorne centre.

'I like that we live in a rural part of Thorne with old buildings. Independent shops and businesses. Natural areas. Out of school extracurricular activities for children, and Community celebrations.'

'Pavements could be improved, uneven and dangerous.'

What have we achieved in the last 12 months?

The **EAST Locality Plan** has now reached its first year milestone. Over the last 12 months local people, businesses, VCFS and partners have come together to co-design, co-produce and co-deliver against our local priorities in order to make a positive difference across our communities.



Environment, Sustainability & Green Spaces

- **Green Flag status** awarded to Hatfield's Quarry Park
- **Tiny Forests tree planting (600 trees)** taking place across Kirton Lane Primary school in Stainforth and King Edwards School in Thorne contributing to Queen's Green Canopy initiative
- Working on the development of a 'friends of group in Stainforth, such as 'The Friends of Peacock Park'
- Supported the **Environment & Sustainability newsletter sent out to the East Locality**, providing residents with information regarding what action they can do to support a greener Doncaster
- Launch of the **Environmental Pride Community project grants**. Applications made across the East for grants of £100-£5000
- **Allotments across the East** provide opportunities for the community to protect and enhance their local green spaces. From establish plots in Thorne and Moorends to new community site starting up in Armthorpe
- Upkeep across all wards in the East to **ensure community green spaces are cut and useable** for all local football teams. Bin reviews carried out and replacement of new bins. Each ward area is kept clean and tidy with weeding and routine scheduled road sweeping. Street Scene supporting community litter pickers across every ward with equipment and waste collection.
- **Fly tipping monitored** across the East area hotspots, with additional monitoring and collaboration between



Community Safety

- There were **multiple days and weekends of action** carried out in each East ward area to prevent and address anti-social behaviour
- The **Report It campaign was launched** and supported through the Your Life Doncaster website, social media and monthly newsletters
- A series of **Practitioner training was delivered around County Lines, Child Criminal Exploitation, and Violence Against Women & Girls'**
- Regular **community engagement meetings re-established** post-covid across all East Ward locations with multiple Pop-up Police Stations to engage the community and provide advice and guidance
- **Community Speed Watch checked** 2,409 vehicles across the East of Doncaster with 96 receiving a fixed penalty and 9 vehicles seized
- **East NPT targeting vehicle crime & burglaries** in Hatfield area, with proactive patrols and crime prevention. PCSOs delivering crime prevention leaflets on parked vehicles to raise awareness of securing your property and vehicle
- **Response to increased burglary** -SYP newsletter using WIDEN to prevent burglary. (Windows, Interior, Doors, Exterior, Neighbours)
- **Regular Off Road Bike Patrols** across Armthorpe, Stainforth, Hatfield and Dunscroft



Support for Businesses

- The Advance Team have worked across the East of Doncaster providing pop up employment support and skills development
- **Doncaster College employment support programme**, including summer classes in hairdressing and gaming for pupils who may wish to follow those careers
- Development of a 'Wellbeing Hub' in Stainforth in conjunction with Business Doncaster and a range of Doncaster council teams
- **Project Unity** spanning across the wards of Hatfield and Stainforth and Barnby Dun is well underway to supporting 1,000 local jobs. The onsite hub to provide employment support for local people to use. The development of new
- Funding support for Stainforth4All to work alongside VAD. Providing a combination of digital training and equipment to ensure people are not digitally excluded by skills or means



Mental & Physical Health

- Commissioning of Doncaster MIND peer support group for adults (18+) who need support around their mental health. Residents who may benefit from this support will be identified via linking with partners including the General Practitioner (GP) in Stainforth.
- Doncaster MIND reboot session commissioning of sessions with a focus on wellbeing and self-esteem.
- Development of Mental Health First Aid Champions in Stainforth in conjunction with Business Doncaster, MIND and other local authority teams.
- Commissioning of mental health support in schools, delivered via Worth Unlimited. Each school in Stainforth provided with 0.5 days a week per school, including the high school, targeting six children or young people.
- The Friday Men's club was established to bridge the gap for males to get together and reduce isolation – playing darts, walking, meeting for coffee, chatting and sharing stories. The club have now acquired 2 allotment plots in Stainforth/Barnby Dunn – the intention of the plots will be community gardens for all. As 'No' dig allotments they allow all abilities to participate with raised beds growing organic produce. St Leger committed to helping the group get started and helping to make a plan for each season
- East Health Focus group, a collaborative multi partnership group with health focus, working proactively to improve access to health and improve the provision available in line with the wants and needs of local residents. Compassionate weight management shared across partners of East Health focus group
- Active Travel investment to provide a safe cycling route to the City Centre from Kirk Sandall Train station.
- DARTS Dance session in Armthorpe, Stainforth and Thorne for over 50's. Sessions work to support social interaction and qualified dance teachers able to support with fall prevention.

Find full details on the progress made as part of the Locality Plan for the East communities, by visiting:

www.yourlifedoncaster.co.uk/east



Youth Provision & Community Pride

- Development of a YARN toolkit. Shaping Stainforth created a toolkit to support communities in making and managing their neighbourhoods. Shaping Stainforth worked with Green Spaces office to explore how the 'Voice Opportunity Power' toolkit could be used with young people
- Funding provided for Flying Futures to work collaboratively with Team Mac, Game Changed Network and Club Thorne to provide children & young people and families of ALL East communities with activities & experiences. Followed by a Community Come Together event with a gala, activities including fishing, archery, sports, live music, walks, food & drink
- Your Life Doncaster- Social media tool to share good news stories and events to all communities. Email contacts for over 3,500 residents. All Doncaster Council services to have at least one web editor who can update and add events/news/IAG to keep all residents up to date with the latest information
- HAF and Universal programmes ran across the East during school summer holidays and half terms, providing local free or low cost activities for children and young people. Family hubs provided a successful picnic in the park over the summer holiday
- Support from Local Councillors and community members, 'Right Up Our Street' brought arts to local communities with the Mystery Bird light show in Edenthorpe and Kirk Sandall and Stainforth & Barnby Dun
- The development of a community-recognised symbol that represents Shaping Stainforth via a local creative company. This was coproduced with residents of Stainforth
- Launch of Your Family hub at Vermuyden Centre in Thorne. Your Families" triage teams are mobilised and delivering their service offer, the swift response to meeting needs is proving successful
- Over 50% of requests for support to "Your Families" service are managed through a see and solve approach in triage. The current feedback rating of the service from families is 2.95 out of 3 and for professionals using the service the current feedback rating is 4.61 out of 5.

PRIORITIES FOR EAST LOCALITY

At the beginning of this plan, we stated we would define the priorities for improving the area over the next year. We have outlined how we have analysed the information and have identified the following priorities for the East Locality:



Community Safety



Environment, Sustainability and Green Spaces



Thriving Communities



Youth Provision



Fairness, Health and Wellbeing

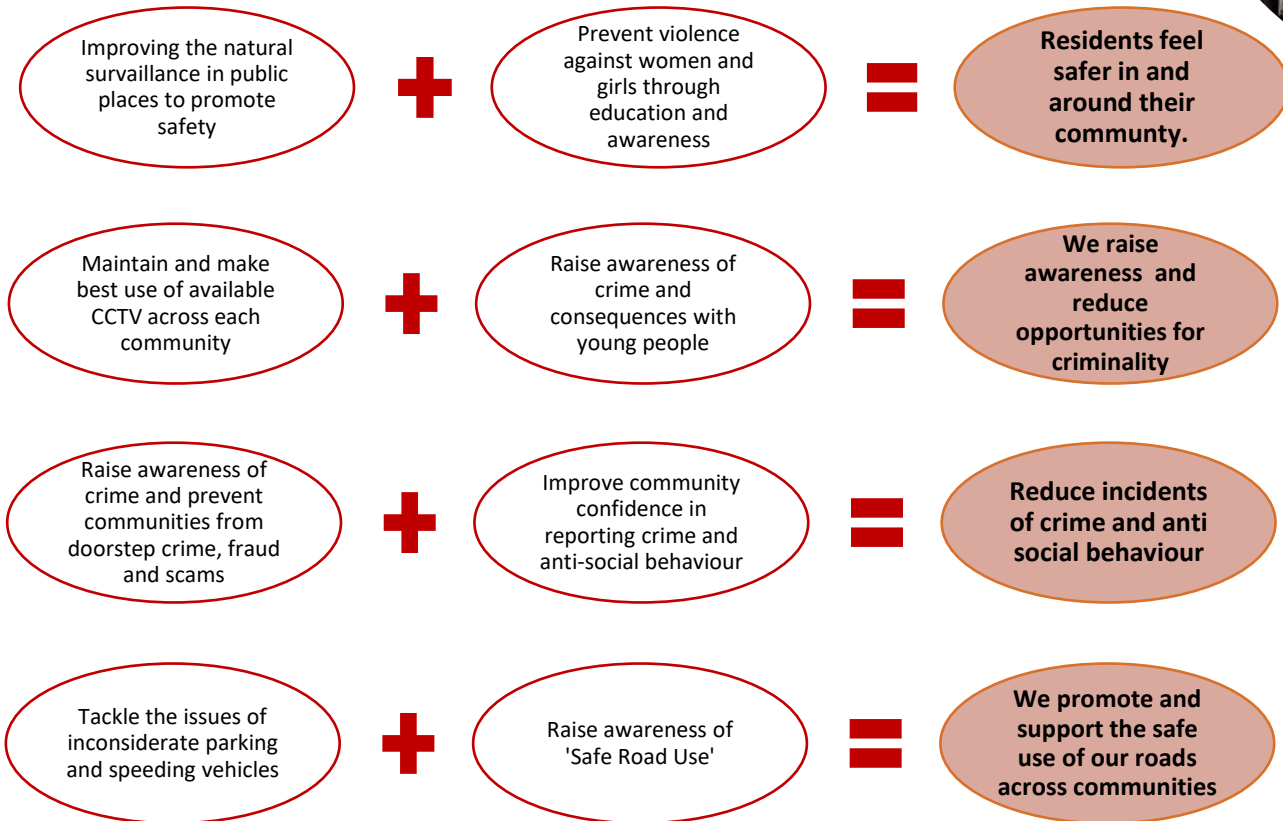
On the following pages, we have illustrated further details of what actions will support improvement for each priority theme and how this will build on and link to existing strategies, plans and activity.

***The plans and strategies detailed in the coming pages are examples of how we are currently working to support these priority areas and are not meant to represent a complete list. Extracts need to be considered in the context of the whole plan or strategy document**



Improve Community safety

Through effective **coordination, continuous engagement, collaboration** and **communication** we will **work together to build on the local strengths and assets** across the East Locality:



SUPPORTED BY

Doncaster Community Safety Strategy

- Work closely with key partners to improve the public experience of reporting crime
- Effectively manage ASB through proactive and responsive approaches
- Effective management of first time entrants into the criminal justice system to ensure low levels are maintained
- Reduce the number of children, young people and families affected by drug and/or alcohol misuse
- Monitor and respond to increased levels of alcohol consumption and referrals for alcohol treatment
- Protect communities from cyber enabled crime such as fraud

South Yorkshire Safer Roads Partnership: Vision Zero Strategy

- No human being should be killed or seriously injured as the result of a road collision in South Yorkshire

Children and Young People's Plan

- Reduce anti-social behaviour and the root causes
- Reduce the number of Children & Young People at risk of exploitation

Housing Strategy

- Work with the Safer Stronger Doncaster partners to reduce ASB in and around Doncaster
- Tackle drugs and reduce ASB and the root causes

Anti- Social Behaviour Delivery Plan

- Effectively manage anti-social behaviour through proactive and responsive approaches to respond to incidents.
- Tackle the issue of illegal off-road bikes and quads through a partnership approach, utilising all available tools and powers
- Communicate the successful use of existing CCTV through newsletters to demonstrate the benefits and value of our CCTV deployments.

Doncaster Borough Strategy 'Doncaster Delivering Together'

- Tackle crime and anti-social behaviour and the root causes
- Tackle domestic abuse and its root causes

Health & Wellbeing Strategy

- Reducing alcohol-related harm requires a focus on prevention and early intervention alongside conventional treatment

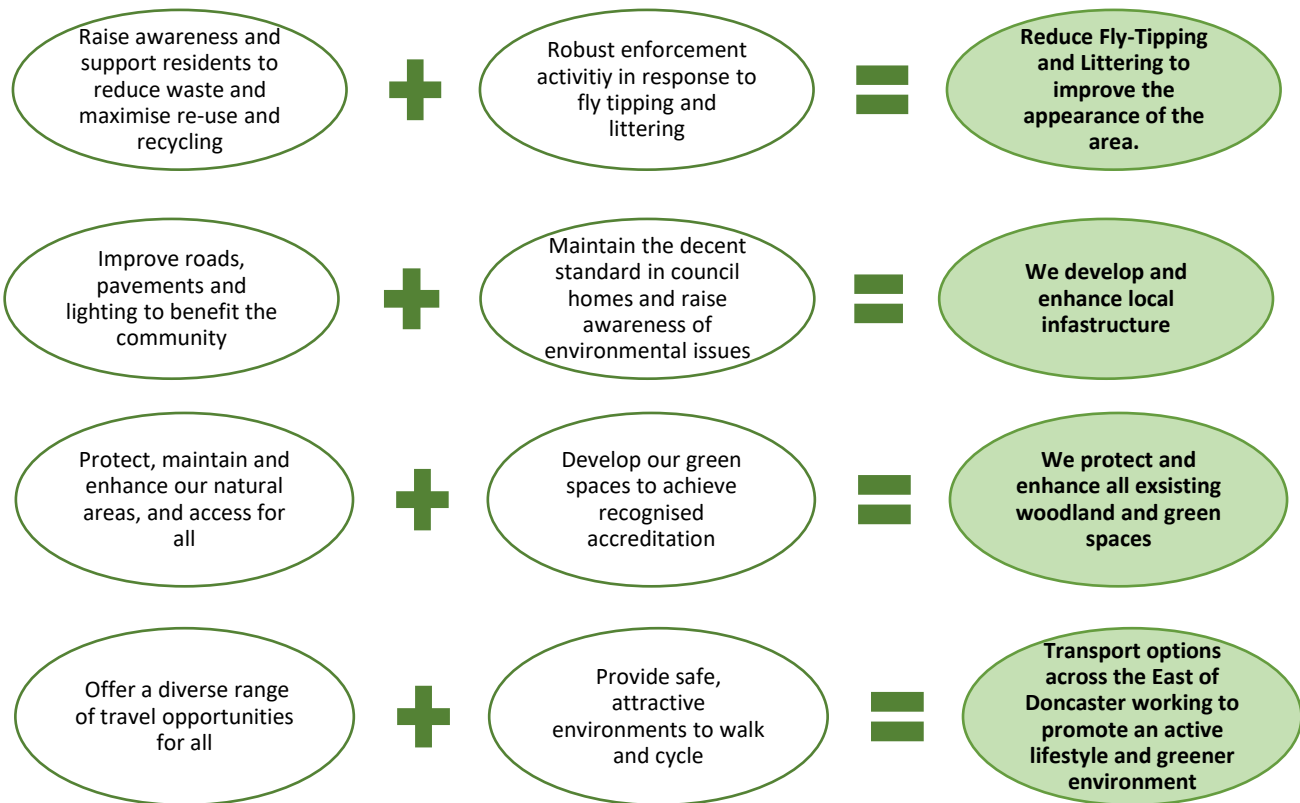
Violence Reduction Action Plan

- Develop an effective multi-agency response to tackling violence against women and girls
- Ensure victims of violent crime receive the appropriate and timely support
- Promote the public health approach to reducing violent crime



Improve Environment, Sustainability and Green Spaces

Through effective **coordination, continuous engagement, collaboration** and **communication** we will **work together to build on the local strengths and assets** across the East Locality:



SUPPORTED BY

Environment & Sustainability Strategy

- Use the Future Parks Programme to develop, implement and share best practice; and integrate new technologies into parks provision through the Smart Parks project.
- Develop and implement a tree-planting programme, to include various sized sites from individual trees in gardens, to strategic woodland creation where feasible.
- Robust and fair enforcement activity in response to fly tipping and littering.
- Improve awareness of legal waste disposal contractors and the consequences of using unauthorised contractors.
- Effective and accessible communication and engagement to discourage fly tipping and littering.
- Reduce energy use and encourage the production and use of renewable energy.

Get Doncaster Moving Strategy

- Deliver the actions within the Doncaster Future Parks Plan, including 15 bespoke park plans.
- Increase the land devoted to greenspace and nature to support physical activity.
- Support complementary and sustainable community led programmes that are designed by local people in their local area.

Housing Strategy

- Aim to complete a new condition survey of privately owned homes.
- Work more proactively with private rented sector landlords and tenants to engage, educate and enforce when needed
- Maintain the decency standards of all Council homes

Doncaster Local Plan: Sustainability appraisal

- Provide more green spaces and trees
- Create new areas of biodiversity value
- Offset / compensate for the loss of habitats and species as a result of development
- Protect and restore priority species and habitats Geodiversity

Doncaster Borough Strategy 'Doncaster Delivering Together'

- Reduce fly-tipping and graffiti and regularly clean the streets and roads.

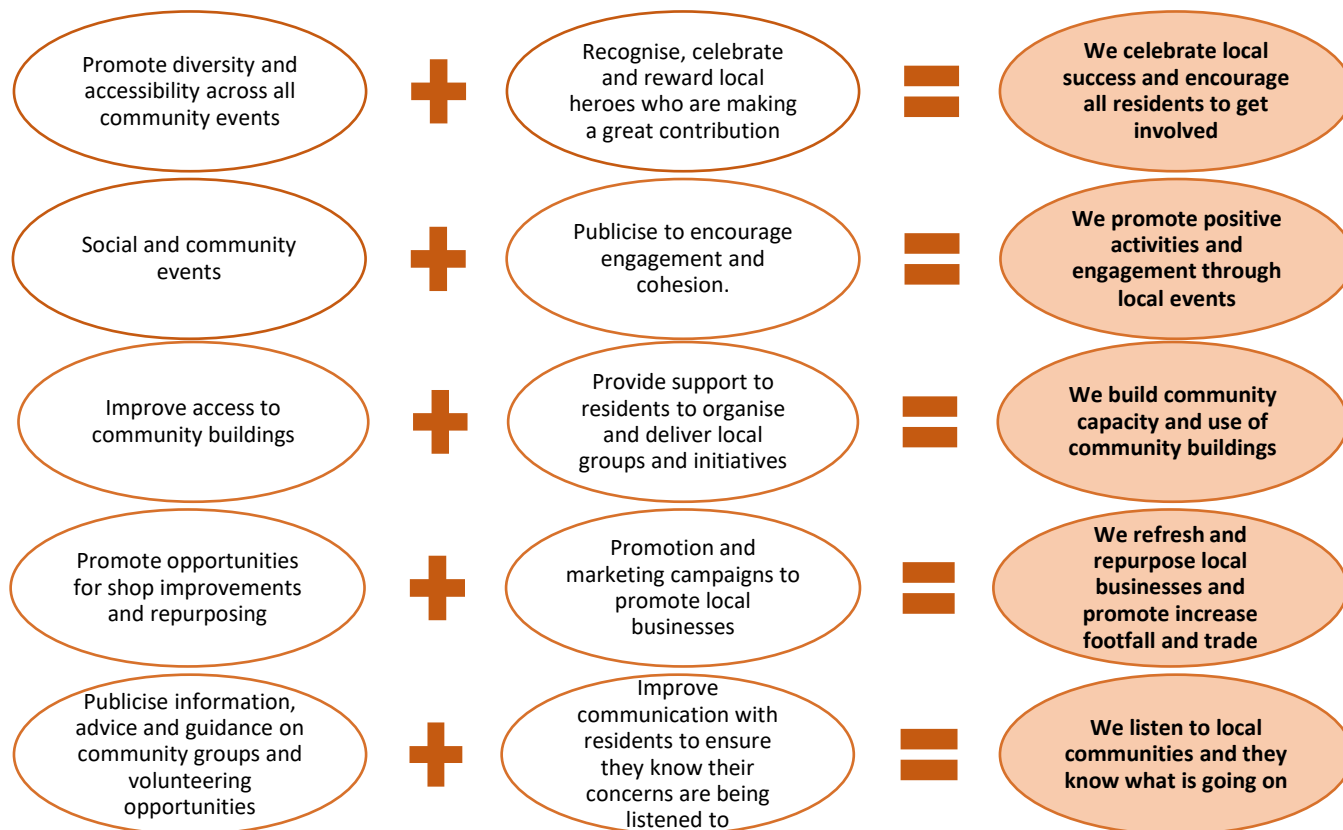
Economic Strategy

- Create a thriving green sector and build the skills for local residents to access it
- Support organisations across Doncaster to have a positive social impact on people, places and planet
- Transition our industries and communities to be circular, low waste and low carbon



Create and support Thriving Communities

Through effective **coordination, continuous engagement, collaboration and communication** we will **work together to build on the local strengths and assets** across the East Locality:



SUPPORTED BY

Community Engagement Strategy

- Make community information available
- Map community enquiries to areas to better understand local issues
- Make our community assets available to local communities
- Explore how we can use people in their community to deliver key messages to reach more people
- Explore an annual event to celebrate the work of Voluntary, Community, Faith sector

Cultural Strategy

- Take a partnership approach to delivering Doncaster's festivals and events
- Identify ways to engage with local people who don't traditionally take part
- Ensure culture is accessible to residents with protected characteristics
- Champion amateur and voluntary arts and culture supporting them to thrive

Get Doncaster Moving Strategy

- Work across public and private sector organisations, businesses, residents and voluntary and community sector to provide more equitable, inclusive and enjoyable local opportunities to be active.
- Develop and deliver an engagement and communication plan to support consistent messaging so that local people have the right exposure to the campaigns and range of opportunities available.

Doncaster Borough Strategy 'Doncaster Delivering Together'

- Increase the availability and invest in the quality of activities for families and young people.
- Use Family Hubs to deliver a range of activities, services and information.
- Provide more equitable and inclusive opportunities to enjoy art, culture, sport and community activities.

Doncaster Local Plan sustainability appraisal

- Get people involved in local issues.
- Make people proud of their own community and Doncaster.

Economic Strategy

- Provide high quality business, enterprise, and investment support
- Support organisations across Doncaster to have a positive social impact on people, places and planet
- Create a thriving green sector and build the skills for local residents to access
- Transition our industries and communities to be circular, low waste and low carbon
- Create a thriving City Centre and local town centres that foster community wellbeing and civic pride
- Strengthen and promote the cultural sector and visitor economy across Doncaster
- Develop a more accessible, affordable, and green transport system
- Support employers across Doncaster to provide employment opportunities that are inclusive and support health and wellbeing

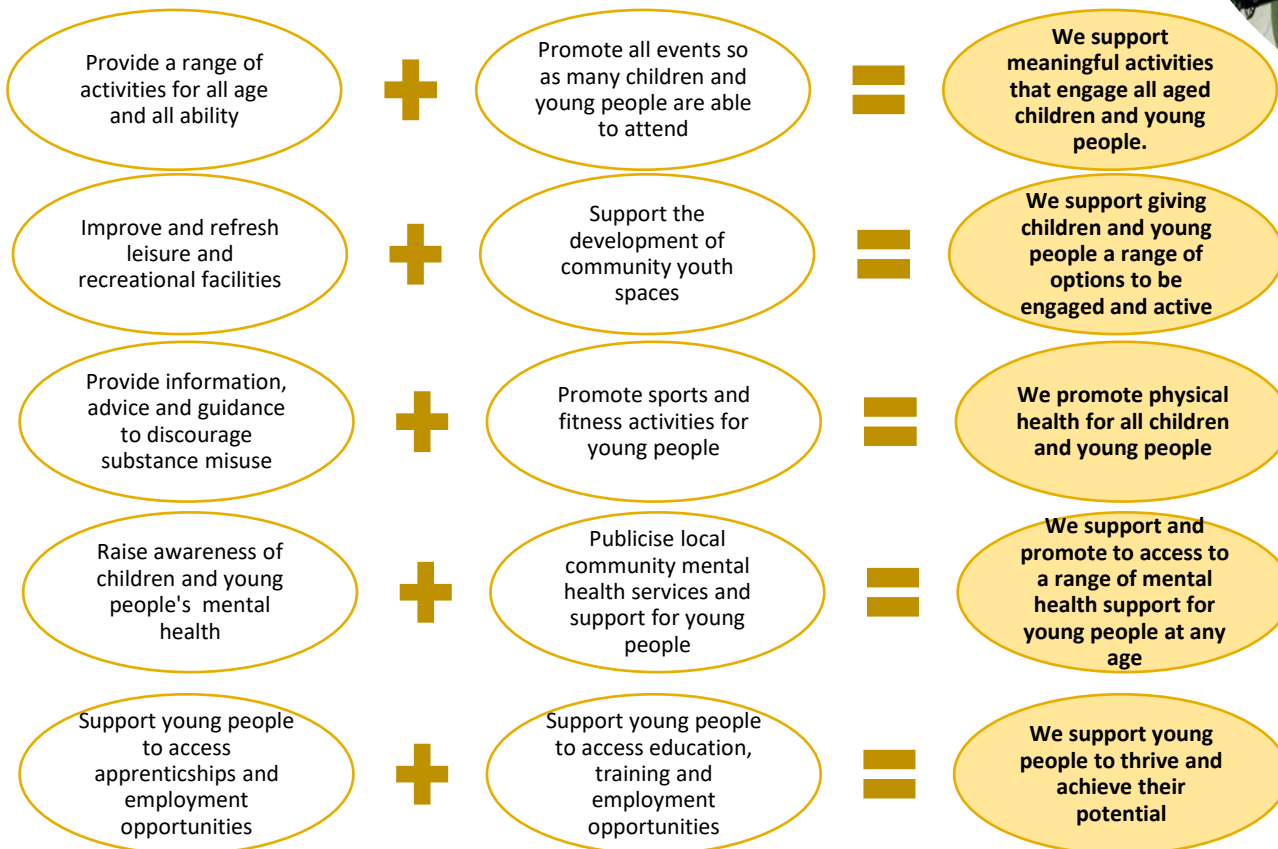
Well Doncaster Community Plans

- Provide continuous professional development and training to all voluntary and paid staff who engage with young people to promote the benefits of physical activity.
- Influence decision makers to provide accessible and affordable community use of sports facilities.



Improve Youth Provision

Through effective **coordination, continuous engagement, collaboration and communication** we will **work together to build on the local strengths and assets** across the East Locality:



SUPPORTED BY

Early Help Strategy

- Empower children young people and families to provide feedback
- Provide accessible forums for local residents to have a voice
- Develop the 'Your Life' offer to increase reach and visibility of local services

Get Doncaster Moving Strategy

- Refresh Doncaster's stock of leisure facilities, to meet community needs.
- Support every primary school pupil to be physically active for more than one hour a day.
- Take a test and learn approach to temporary and permanent street closures including School Streets and Play Streets.
- Review, refresh and support the delivery of the Get Doncaster Walking strategy.
- Support the delivery of the Get Doncaster Cycling Strategy

Education & Skills Strategy

- Ensuring that every child and young person achieves their potential at key stages 2 to 4
- Providing opportunities for residents to learn and acquire new skills throughout life, and access secure, rewarding employment
- Addressing educational and skills disparities across our communities and the issue of social mobility.

Health and Wellbeing Strategy

- Using social media to reach those individuals and groups who do not engage with services
- Make greater use of campaigns to raise public awareness and influence peoples' attitudes to alcohol, and work with business to help foster an ethos of responsibility
- Communication and awareness raising to all

Education & Skills 2030 Strategy

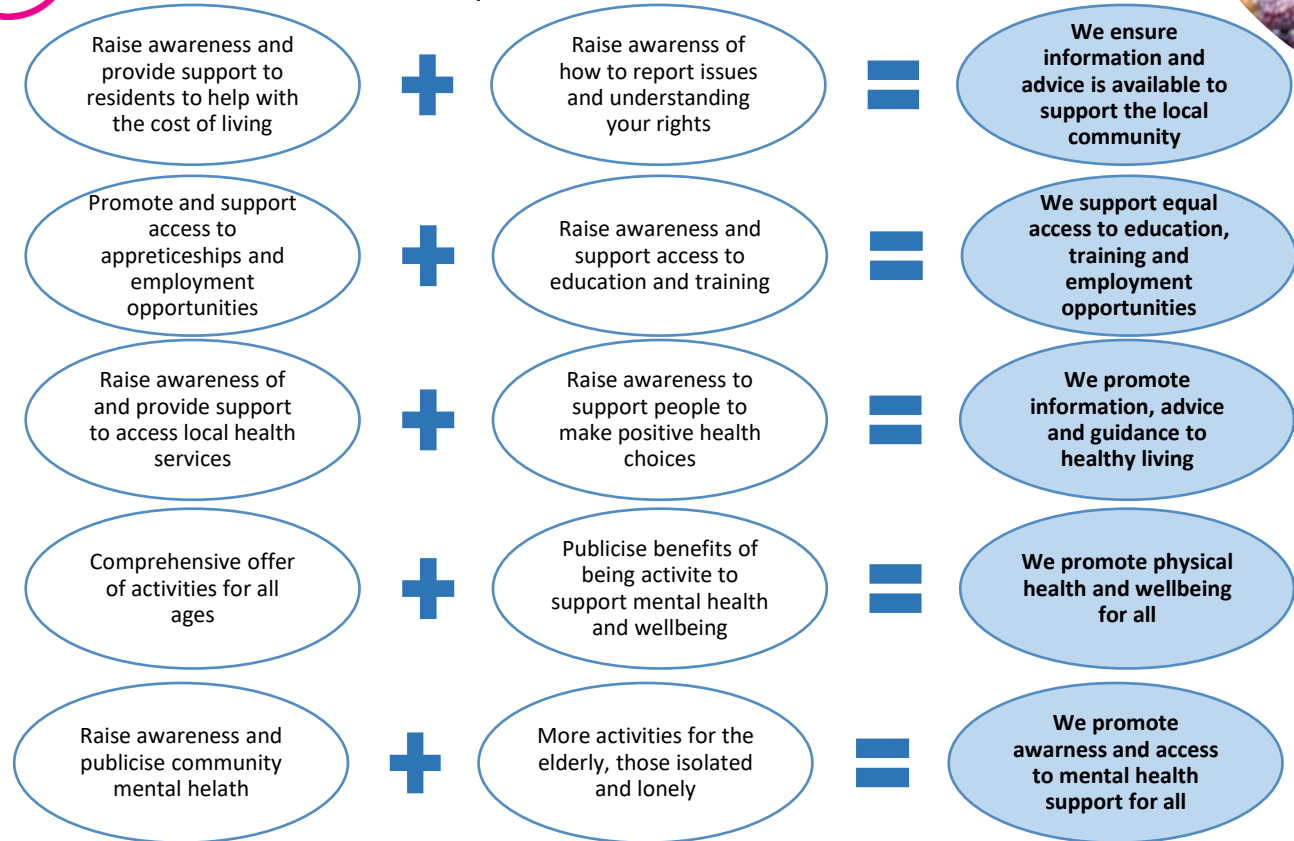
- Promote readiness to learn & build strong foundations in learning.
- Promote family and community learning to support families.
- Ensure the Education and skills system is responsive to the needs of the local and national economy.
- Champion & empower disadvantaged learners to enable social mobility.
- Improve outcomes for minority & vulnerable learners.
- Equitable lifelong learning for every community.



Improve Fairness, Health and Wellbeing



Through effective **coordination, continuous engagement, collaboration and communication** we will **work together to build on the local strengths and assets** across the East Locality:



SUPPORTED BY

Doncaster Economic Strategy

- Support everyone in Doncaster to have equitable access to employment opportunities by utilising a compassionate approach to employment support
- Support residents to improve digital skills

Doncaster All Age Carers Strategy

- Carers are aware of their rights and their entitlement to an assessment
- Carers have access to activities with 1-2-1 and group support

All Age Learning, Disability & Autism Strategy

- Be supported to access universal and early support services, where their needs are understood, they are accepted for who they are and reasonable adjustments are made

Get Doncaster Moving Strategy

- Embed physical activity into health and care pathways – prehabilitation, rehabilitation and treatment.
- Implement the Healthy Learning, Healthy Lives programme in early years, schools and colleges

Health & Wellbeing Strategy

- Education – lifelong learning, work readiness, family support
- Economy –business support, money management, living wage/fairer working conditions, apprenticeships/employment opportunities and financial planning
- Physical and mental health – personal responsibility; physical activity, lifestyle choices, reducing stigma

Core20plus5

- Core20 – the most deprived 20% of the national population
- Clinical areas of health inequalities; Asthma, Diabetes, Epilepsy, oral health, mental health

South Yorkshire Integrated Care Plan

- People in South Yorkshire live longer and healthier lives and the physical and mental health and wellbeing of those with the greatest need improves the fastest
- People are supported to live in safe, strong and vibrant communities
- People are equipped with the skills and resources they need to thrive
- Reduce the economic inactivity rate in South Yorkshire to less than 20% across our places by 2028/30
- Develop a Workforce Strategy that will enable us to collaborate across South Yorkshire to educate, develop and support our workforce
- Contribute to South Yorkshire becoming an anti-racist and inclusive health and care system through everything that we do and how we do it with our communities. Committing to real actions that will eradicate racism.



Your Life Doncaster

Discover the Your Life Doncaster website
you can find helpful information about
your community, including:

Help

Information and support for adults, young people and children to live happy and healthy lives

Community

What is available in your area from community groups and Family Hubs, to your local Police and community contacts

News

New stories, events and updates about your local community



Find out more by visiting
www.yourlifedoncaster.co.uk